



## City Growth Rates in Eastern European Transition Economies

Journal:	<i>Journal of Economic Geography</i>
Manuscript ID:	Draft
Manuscript Type:	Original Article
Date Submitted by the Author:	n/a
Complete List of Authors:	Necula, Ciprian; Bucharest Academy of Economic Studies, FABBV, DOFIN Valetka, Uladzimir; Belarus State Technological University Ibragimov, Marat; Tashkent State University of Economics Radu, Alina-Nicoleta; Bucharest Academy of Economic Studies, FABBV Bobeica, Gabriel; Bucharest Academy of Economic Studies, FABBV
Keywords:	cities, city growth, Gibrat` s law, transition economies, post-communist economies
JEL Classification:	O18, R11, R12

SCHOLARONE™  
Manuscripts

## City Growth Rates in Eastern European Transition Economies

C. Necula<sup>‡1</sup>, U. Valetka<sup>2</sup>, M. Ibragimov<sup>3</sup>, G. Bobeica<sup>1</sup>, A-N. Radu<sup>1</sup>

**Abstract:** *The paper investigates the dynamics of city growth rates in twelve transition economies from the former communist bloc. The study explores the validity of Gibrat's law using a battery of parametric and nonparametric methods that are robust to cross-sectional dependence. The analysis is conducted on data for cities over 100,000 inhabitants in the period 1970-2007, as well as on detailed city data in the period 2000-2009 for three of the countries. To capture the influence of a potential break due to the fall of the communist regime, two subsamples, respectively 1970-1989 and 1990-2007, are also analyzed. Although there is mixed evidence, the findings provide support for accepting Gibrat's law in ten of the countries, especially after the break is accounted for.*

**Keywords:** cities, city growth, Gibrat's law, transition economies, post-communist economies

**JEL Classification:** O18, R11, R12

**Acknowledgments:** We would like to thank Ira Gang, Tatiana Mikhailova, Randall Filler, Tom Coupe, the participants in the RRC IX workshop at CERGE-EI and the participants in the workshop "Cities: An Analysis of the Post Communist Experience" at the 11th Annual Global Development Conference for valuable discussions and suggestions. All errors and omissions are solely our responsibility. This research was supported by a grant from the CERGE-EI Foundation under a program of the Global Development Network. Ciprian Necula also acknowledges financial support from CNCSIS-UEFISCSU, project number PN II-RU PD\_583/2010. All opinions expressed are those of the authors and have not been endorsed by CERGE-EI, the GDN or CNCSIS.

### 1 Introduction

The demise of the socialist economic system and its subsequent restructuring has led to profound changes in the spatial patterns of urban economies in cities of the Central and Eastern European (CEE) and Commonwealth of Independent States (CIS) countries. The most important and visible trend of urban development during the transition period has been the decentralization of economic activities, a process which has played a major part in the transformation of the post-socialist city. The privatization of assets and the introduction of land rent have been the main driving factors for the process of urban spatial readjustments within the reality of a new market-oriented social environment (Stanilov, 2007).

One of the most striking regularities in the location of economic activity is how much of it is concentrated in cities. Understanding urbanization and economic growth requires understanding the variety of factors that can affect the size of cities and their short-term dynamics. The existence of very large cities and the wide dispersion in city

---

<sup>‡</sup> Corresponding author, e-mail: ciprian.necula@fin.ase.ro

<sup>1</sup> Bucharest Academy of Economic Studies

<sup>2</sup> Belarusian State Technological University and Center for Social and Economic Research Belarus

<sup>3</sup> Tashkent State University of Economics

1  
2  
3 sizes are all particularly interesting qualitative features of urban structure worldwide. A  
4 surprising regularity, Gibrat's Law (Gibrat, 1931), states that the growth rate of an  
5 economic entity (in this case a city) is independent of its initial size.  
6

7 Although in the 1990s numerous studies began to test the validity of Gibrat's law,  
8 the evidence on the fulfillment of this law in the former communist transition economies  
9 is lacking. On the other hand, the law has been tested extensively for advanced  
10 economies, with a consensus that it holds in the long term. Eaton and Eckstein (1997)  
11 concludes that considering only the 39 most populated French cities there is no  
12 correlation between city size and growth rate, accepting Gibrat's Law. This result goes  
13 against the one obtained by Guérin-Pace (1995) when considering a wide sample of cities  
14 with over 2,000 inhabitants. This is no surprising contradiction since Eeckhout (2004)  
15 demonstrates the importance of choosing sample size in the analysis of city size  
16 distribution: the arbitrary choice of a truncation point can lead to skewed results.  
17 However, Eaton and Eckstein (1997) and Davis and Weinstein (2002) accept the Gibrat's  
18 Law for Japanese cities, although they use different sample sections (40 and 303,  
19 respectively) and time horizons. Moreover, Davis and Weinstein (2002) argue that the  
20 effect of large temporary shocks (Allied bombing in the Second World War) on growth  
21 rates disappears completely in less than 20 years. Brakman et al. (2004), taking into  
22 consideration 103 German cities, concludes that bombing had a significant, but  
23 temporary impact on post-war city growth. Bosker et al. (2008) employs a sample of 62  
24 cities in West Germany and finds evidence against Gibrat's law for about 75% of the  
25 cities in the sample. Clark and Stabler (1991), using data panel methodology and unit root  
26 tests, accept the hypothesis of proportional urban growth for Canada. Resende (2004)  
27 accepts Gibrat's law by applying the same methodology to 497 Brazilian cities. Ioannides  
28 and Overman (2003) accept the fulfillments of Gibrat's Law for the case of the US,  
29 taking into consideration a sample of 135 MSAs (Metropolitan Statistical Area).  
30 However, the hypothesis is rejected by Black and Henderson (2003) using a different set  
31 of MSAs. These contradictory results may also be explained by the usage of different  
32 econometric methods. While Ioannides and Overman (2003) employs nonparametric  
33 techniques, Black and Henderson (2003) focuses mainly on panel data unit root tests.  
34 Eeckhout (2004) is the first study to use all the sample of cities in US, without size  
35 restrictions. Using both parametric and nonparametric methods, Eeckhout (2004) accepts  
36 Gibrat's Law for the US. For China, Anderson and Ge (2005) obtains a mixed result with  
37 a sample of 149 large cities. Petrakos et al. (2000) and Soo (2007) reject Gibrat's Law in  
38 Greece and Malaysia, respectively. Recently, a reassessment of Gibrat's Law in the  
39 context of countries size and in the context of regions within a country has been carried  
40 out. González-Val and Sanso-Navarro (2010) finds evidence of Gibrat's Law if countries  
41 growth rates are considered. Giesen and Suedekum (2010) provides empiric evidence  
42 supporting the theory that Gibrat's law is satisfied not only at the aggregate national  
43 level, but also at the region level, showing that urban growth among large cities is scale  
44 independent basically "everywhere" in space in Western Germany.  
45

46 The present paper extends the existing literature in several directions. First, it fills  
47 a gap in the literature by providing a comprehensive analysis of the Gibrat's law for the  
48 Eastern European transition economies. Second, it explores the impact of the breakdown  
49 of the communist regime on the dynamics of city growth rates in these countries. Finally,  
50 the methodology consists in a battery of parametric methods that are robust to the  
51  
52  
53  
54  
55  
56  
57  
58  
59  
60

1  
2  
3  
4 presence of cross-sectional dependence. More specifically, growth regressions with  
5 Driscoll and Kraay (1998) cross-sectional dependence robust standard errors and Pesaran  
6 (2007) panel unit root test that account for the presence of cross-sectional dependence are  
7 employed. Another methodological novelty consists in the usage of non-parametric  
8 techniques capable of dealing with a mix of continuous and discrete data (Hayfield and  
9 Racine, 2008; Li and Racine, 2003). This is convenient because it allows identifying,  
10 using non-parametric methods, the influence of discrete variables accounting for possible  
11 structural breaks.  
12

## 13 14 **2 Data**

15  
16 The analysis of this paper is based on a unified and comprehensive database for  
17 the CEE and CIS countries city size data (Necula et al., 2010). Obviously, when studying  
18 the dynamics of the city distribution, employing a large sample of cities, towns and  
19 villages increases the accuracy of the results. However, there is a trade-off between the  
20 size and the frequency of the available data sample. To account for this trade-off, the  
21 analysis in this paper is conducted on two datasets.  
22

23 The first dataset consists in detailed city size data from Poland, Belarus and  
24 Latvia for the period 2000-2009. More specifically, in the case of Poland the largest 200  
25 cities are considered, in Belarus the largest 50 cities, and in Latvia the largest 30 cities.  
26 The main source of the detailed data is the national official statistical information  
27 services of the respective countries.  
28

29 The second one is focused on data on cities over 100,000 inhabitants in Eastern  
30 European countries for the period 1970 – 2007. The main source of the data is the annual  
31 United Nations Demographic Yearbooks (UNDY). The main difficulty consisted in  
32 reconstructing the data backwards, before 1989, on cities in the CIS countries since they  
33 are reported under USSR. The situation is similar for some of the CEE countries, such as  
34 the countries in the Former Yugoslavia, or in the Czech Republic and Slovak Republic.  
35 To ensure that the database has a reduced number of missing observations, the data were  
36 collected irrespective of the methodology employed in the UNDY in different years (i.e.  
37 CDJC - census de jure, complete tabulation; ESDF - estimates, de facto; ESDJ -  
38 estimates, de jure). Because data on cities over 100,000 inhabitants in Albania, Moldova,  
39 and countries from the Former Yugoslavia is too sparse to be of any use, these countries  
40 are excluded from the analysis. The number of cities over 100,000 inhabitants in the  
41 countries from our sample is reported in Table 1.  
42  
43  
44  
45

46  
47 [INSERT Table 1]  
48

49 As one can easily observe from Table 1 in some countries the sample size for  
50 cities over 100,000 inhabitants is insufficient for robust results. Therefore, five of the  
51 countries are pooled into two groups, since there is a relatively low cross-section  
52 dimension when analyzed separately. The first group consists of the Baltic States  
53 (Estonia, Latvia, Lithuania), the second one of the countries from the Former  
54 Czechoslovakia (Czech Republic, Slovak Republic). The average number of cities over  
55 100,000 inhabitants for the remaining units is as follows: Russian Federation 152,  
56  
57  
58  
59  
60

Ukraine 45, Poland 37, Romania 21, Belarus 12, Bulgaria 8, Hungary 8, Former Czechoslovakia 8, and Baltic States 8.

Table A.1 in the Appendix describes the dataset, presenting the number of observations, the time and cross-section dimensions of the panel, the average, standard deviation, minimum and maximum city size.

### 3 Methodology

The Gibrat's law hypothesis is tested by employing both parametric and nonparametric methods. The simplest parametric test consists in estimating the following growth equation:

$$\ln S_{it} - \ln S_{it-1} = \alpha + \beta \ln S_{it-1} + \varepsilon_{it} \quad (1)$$

where  $S_{it}$  denotes the size of city  $i$  at the time  $t$ . Gibrat's law holds if  $\beta = 0$  (i.e. growth is independent of the initial size). To ensure validity of the statistical results one must adjust the standard errors of the coefficient estimates for possible dependence in the residuals. The results of these regressions are usually heteroskedastic (Gonzalez-Val et al., 2008), so it is suggested in the literature to compute the standard errors using White Heteroskedasticity-Consistent Covariance Matrix Estimator (White, 1980). However, another question to be tackled is the presence of cross-sectional dependence in panel data on city sizes. The cross-sectional dependence is tested using the Pesaran (2004) test, which does not depend on any particular spatial weight matrix when the cross-sectional dimension is large. In this paper, to account for the effect of potential cross-correlated residuals, Driscoll and Kraay (1998) standard errors are employed. Driscoll and Kraay (1998) modifies the standard Newey and West (1987) covariance matrix estimator such that it is robust to very general forms of cross-sectional as well as temporal dependences. Moreover, it is suitable for use with both, balanced and unbalanced panels (Hoechle, 2007).

Clark and Stabler (1991) pointed out that testing for Gibrat's Law is equivalent to testing for the presence of a unit root. This idea has also been emphasized by Gabaix and Ioannides (2004). If the null hypothesis that the city population time series has a unit root is rejected, the null hypothesis that its size evolves according to Gibrat's Law is also rejected. Panel data unit root tests have been proposed as alternative, more powerful tests than those based on individual time series unit roots tests. The panel unit root approach to investigate the validity of Gibrat's Law has been pioneered by Clark and Stabler (1991) and has already been applied by Davis and Weinstein (2002), Resende (2004), Henderson and Wang (2007), Soo (2007) and Bosker et al. (2008).

Also, when exploring the existence of unit roots in panel data, it is important to take into account the presence of cross-sectional dependence. Most of these studies employed conventional (*i.e.* first generation) unit root tests that assume cross-sectional independence. The first generation test proposed by Levin, Lin and Chu (2002) is applicable for homogeneous panels where the coefficients for unit roots are assumed to be the same across cross-sections. Im, Pesaran and Shin (2003) allows for heterogeneous panels and proposes panel unit root tests which are based on the average of the individual ADF unit root tests computed from each time series. The null hypothesis is that each individual time series contains a unit root, while the alternative allows for some but not all of the individual series to have unit roots. However, the correct application of these



1  
2  
3 techniques depends crucially on the assumption that individual time series are cross-  
4 sectional independent. This might be a restrictive assumption when using city size panel  
5 data. Conventional panel unit root tests, such as Levin, Lin and Chu (2002) and Im,  
6 Pesaran and Shin (2003), could lead to significant size distortions in the presence of  
7 neglected cross-section dependence and, generally, to over-rejection of the null  
8 hypothesis.  
9

10 Much of the recent research on non-stationary panel data has focused on the  
11 problem of cross-sectional dependence. Second generation panel unit root tests that take  
12 into account the potential cross-section dependence in the data have been developed; see  
13 the recent survey by Breitung and Pesaran (2008). A number of panel unit root tests that  
14 allow for cross section dependence have been proposed in the literature that use  
15 orthogonalization type procedures to asymptotically eliminate the cross dependence of  
16 the series before standard panel unit root tests are applied to the transformed series (Bai  
17 and Ng, 2004; Moon and Perron, 2004). On the other hand, Pesaran (2007) suggests a  
18 simple way of accounting for cross-sectional dependence. This method is based on  
19 augmenting the usual ADF regression with the lagged cross-sectional mean and its first  
20 difference to capture the cross-sectional dependence that arises through a single-factor  
21 model. The proposed test has the advantage of being simple and intuitive. It is also valid  
22 for panels where the cross-sample dimension ( $N$ ) and the time dimension ( $T$ ) are of the  
23 same orders of magnitudes. The Monte Carlo simulations employed by Pesaran (2007)  
24 suggests that the panel unit root tests have satisfactory size and power even for relatively  
25 small values of  $N$  and  $T$  (i.e.  $10 < N < 200$  and  $10 < T < 200$ ).  
26

27 The present study makes use of a battery of first and second generation panel unit  
28 root tests. More specifically we employ the first generation Levin, Lin and Chu (2002)  
29 and Im, Pesaran and Shin (2003) tests, and the second generation Pesaran (2007) test.  
30

31 In order to increase the robustness of the results, nonparametric tests are also  
32 implemented. As suggested by Ioannides and Overman (2003) and Eeckhout (2004) for  
33 the non-parametrical analysis of Gibrat's law it is better to use normalized city growth  
34 rates (i.e. from growth rate of city  $i$  in year  $t$  the mean is subtracted and the result divided  
35 by the standard deviation of the growth rates). The widely employed Nadaraya-Watson  
36 kernel regression technique (Nadaraya, 1964, 1965; Watson 1964; Hardle, 1992)  
37 establishes a functional form-free relationship between population growth and country  
38 size for the entire distribution. It consists of taking the following specification:  
39

$$40 \quad g_i = m(s_i) + \varepsilon_i \quad (2)$$

41 where  $g_i$  stands for the normalized growth of city  $i$ , and  $s_i$  is the logarithm of its  
42 size. Therefore, instead of assuming a linear relationship between these two variables, as  
43 in equation (1),  $m(\cdot)$  is estimated as a local average, using a kernel function  $K(\cdot)$ :  
44

$$45 \quad m_{NW}(s) = \frac{\frac{1}{n} \sum_{i=1}^n K\left(\frac{s-s_i}{h}\right) g_i}{\frac{1}{n} \sum_{i=1}^n K\left(\frac{s-s_i}{h}\right)} \quad (3)$$

46 where  $n$  is the sample size, and  $h$  the kernel bandwidth.  
47

48 Starting from the estimated mean,  $m_{NW}(\cdot)$ , the variance of the growth rate can also  
49 be computed using the corresponding Nadaraya-Watson estimator:  
50  
51  
52  
53  
54  
55  
56  
57  
58  
59  
60

$$\sigma_{NW}^2(s) = \frac{\frac{1}{n} \sum_{i=1}^n K\left(\frac{s-s_i}{h}\right) (g_i - m_{NW}(s))^2}{\frac{1}{n} \sum_{i=1}^n K\left(\frac{s-s_i}{h}\right)} \quad (4)$$

Under the null of urban growth independent of initial size one would expect that all cities, regardless of their size, have mean normalized growth rate equal to zero and variance equal to one. These hypotheses are tested by constructing bootstrapped 95-percent confidence bands, calculated from 500 random samples with replacement, as suggested by González-Val and Sanso-Navarro (2010).

The nonparametric techniques employed in this paper allows computing a variety of nonparametric and semi-parametric kernel-based estimators appropriate for a mix of continuous, discrete, and categorical data (Hayfield and Racine, 2008). This kind of nonparametric technique is convenient because it allows identifying the influence of discrete variables accounting for possible structural breaks. The basic idea underlying the treatment of kernel methods in the presence of a mix of categorical and continuous data lies in the use of generalized product kernels. Li and Racine (2003) proposed the use of these generalized product kernels for unconditional density estimation and developed the underlying theory for a data-driven method of bandwidth selection for this class of estimators. The use of such kernels offers a seamless framework for kernel methods with mixed data. Further details on a range of kernel methods that employ this approach can be found in Li and Racine (2007). When all the variables are continuous, these methods collapse to the familiar Nadaraya-Watson nonparametric regression estimators.

The default Gaussian kernel is employed since the specific form of the local averaging function does not have a major impact on the results. On the other hand, bandwidth selection is a key aspect of sound nonparametric kernel regression estimators. The basic approach in the related urban literature (Eckhout, 2004) is to compute the bandwidth according to the “rule of thumb” proposed by Silverman (1986) based on inter-quartile range. In the present study, the bandwidth is selected using a data-driven method, more specifically, the Kullback - Leibler cross-validated bandwidth selection, using the method of Hurvich et al. (1998).

## 4 Results

### 4.1 *Gibrat`s law for detailed city data*

In this subsection the analysis is conducted on the dataset containing detailed city size data in Poland, Belarus and Latvia for the period 2000 – 2009. Pooling observations and using panel data methods is a necessary strategy to increase the reliability of the estimates when the observed period is relatively short (Banerjee, 1999). First, the growth equation (1) was estimated using both pooled data and a fixed effects panel model. The results of these estimations are presented in the first two lines of Table 2.

[INSERT Table 2]

In the urban literature, to test the significance of the parameters, White (1982) standard errors are generally employed since they are robust to heteroskedastic

1  
2  
3 innovations. However, in this case, the estimated regression residuals of the fixed effects  
4 model are cross-sectionally dependent, as is clearly noticeable in the third line from Table  
5 2. The pair-wise cross-section correlations coefficients of the residuals are not zero,  
6 since the average absolute correlation between the residuals of two cities is 0.318 in  
7 Poland, 0.39 in Belarus, and 0.341 in Latvia. Also, Pesaran (2004) cross-sectional  
8 dependence test rejects the null hypothesis of spatial independence on any standard level  
9 of significance. Therefore, this finding indicates that it is advisable to test for significance  
10 using Driscoll and Kraay (1998) standard errors, since they are robust to very general  
11 forms of cross sectional and temporal dependence.  
12

13  
14 The estimates of the pooled model provide strong evidence for the rejection of  
15 Gibrat's law in Poland and Belarus. The evidence in the case of Latvia is less clear since  
16 the null hypothesis that the parameter connecting the growth rate and the size of a city is  
17 zero can be rejected at a level of significance of 5%, but not at a level of significance of  
18 1%. These findings are consistent with the results of the non-parametric estimations,  
19 presented in Figure A.1 in the Appendix. This is no coincidence, since the non-parametric  
20 technique is an alternative estimation method of the pooled model.  
21

22  
23 However, one has to be careful when pooling the data since this can invalidate the  
24 analysis. For example, if the true model is fixed effects, the pooled OLS yields biased and  
25 inconsistent estimates of the regression parameters (Baltagi, 2005). In order to test for the  
26 presence of cross-section specific fixed effects, it is common to perform a Hausman  
27 (1978) test. In this paper, the null hypothesis of no fixed effects is tested using a version  
28 of the Hausman (1978) test proposed by Wooldridge (2001) and Hoechle (2007). Since  
29 this version of the test is robust to very general forms of spatial and temporal dependence  
30 it should be suitable for the case of city size panel data. The results of the tests are  
31 presented in the fourth line of Table 2. They provide strong evidence in the favor of the  
32 fixed effects model because the null of no fixed effects is rejected at any usual level of  
33 significance. The estimates from the fixed effects model provide contrary evidence to that  
34 indicated by the pooled data model. As it turns out, when accounting for city specific  
35 effects, the null hypothesis of cities growing independent of their size can not be rejected  
36 at the level of 5% for any of the three countries.  
37

38  
39 Next, the panel structure of the city population data is further exploited in order to  
40 test for a unit root. Although only 10 observations over time are available, the use of a  
41 panel unit root test with a relatively large cross-section dimension is likely to alleviate the  
42 small-sample bias of a usual ADF unit root test. Black and Henderson (2003) also  
43 employs 10 time observation (decade by decade) in their study on urban evolution in the  
44 USA. Following Clark and Stabler (1991) only a constant has been included as the  
45 deterministic term. The results for the first generation Levin, Lin and Chu (2002) and Im,  
46 Pesaran and Shin (2003) tests, and the second generation Pesaran (2007) test are reported  
47 in the last three lines of Table 2. Although, the first generation tests are used for  
48 completeness, more weight is given to the test of Pesaran (2007) since it allows  
49 investigating the presence of a unit root taking into account cross-sectional dependence,  
50 which is the case of the analyzed sample. Moreover, the test is robust to size distortions  
51 caused by the potential presence of serially correlated errors. As one can easily notice, the  
52 test can not reject the null of a unit root at any usual level of significance, therefore,  
53 providing support for the acceptance of Gibrat's law in all the three countries.  
54  
55  
56  
57  
58  
59  
60



1  
2  
3  
4  
5  
6  
7  
8  
9  
10  
11  
12  
13  
14  
15  
16  
17  
18  
19  
20  
21  
22  
23  
24  
25  
26  
27  
28  
29  
30  
31  
32  
33  
34  
35  
36  
37  
38  
39  
40  
41  
42  
43  
44  
45  
46  
47  
48  
49  
50  
51  
52  
53  
54  
55  
56  
57  
58  
59  
60

However, it has to be stressed that, since specific city effects are taken into account, the deterministic component (the expected growth rate) is different across cities. Therefore, although the coefficient that quantifies the influence of the size on growth is zero, a consistent difference in the expected growth rate between “small” cities and “large” cities might indicate that Gibrat’s law does not hold. This could be the case of Belarus, because the non-parametric analysis indicates that there are differences between the behavior of small cities, medium cities and large cities.

To investigate further, the cities in Belarus are grouped in three categories, respectively the “large” cities group consisting of the largest 8 cities, the “medium” group comprising the next largest 27 cities, and the “small” group with the last 15 cities. The grouping was done such that the modified Hausman (1978) test indicates that for each of the group a pooled model is adequate. There is a significant difference between the average growth rates of the cities in these groups, with an average annual growth of 0.49% for the first group, -0.15% for the second group, and -0.46% for the small cities group. Therefore, a growth regression was estimated for each of the group, and another one for the entire sample but controlling for group specific characteristics. The results are reported in Table A.2 in the Appendix. It seems that for the large cities group there is a significant dependence of growth on size. Moreover, after the dummy variables controlling for different groups are accounted for, the coefficient quantifying the dependence of the size of the city on its growth rate is statistically significant at 5%. This finding proves the validity of intuitive doubts as to proportionality of growth in Belarus where the intentionally designed redistribution measures are evident.

Overall, in the period 2000-2009 there is very strong evidence that Gibrat’s law holds for Latvia and strong evidence that it is valid in Poland. However, it seems that, at least in the short run, there is a divergence pattern in the case of Belarus. A longer time span is necessary for a deeper investigation of the long run dynamics of city growth.

#### 4.2 *Gibrat’s law for cities over 100,000 inhabitants in the period 1970 - 2007*

In this subsection the analysis turns to cities over 100,000 inhabitants in the period 1970 – 2007. There are twelve countries in the sample, but, after pooling some of them as described above in the data section, nine units remain, respectively Russia, Ukraine, Poland, Romania, Belarus, Bulgaria, Hungary, Former Czechoslovakia, and Baltic States.

A major problem with this dataset is the existence of missing observations. Although, data were collected irrespective of the methodology employed in the UNDY in different years, Hungary is the only country in the sample that has all the 38 observations over time. In the Baltic States there are 32 time observations, in Bulgaria 28, in Belarus and Poland 27, in Romania 26, in Former Czechoslovakia 25, in Russia 24, and in Ukraine only 17. Moreover, since growth rates are needed in our analysis, the problem of missing data is further amplified since the growth rate can not be computed if consecutive year data is not available. When estimating the growth regression using pooled data or the fixed effects model, an assumption had to be made in order to alleviate this problem of missing growth rates. More specifically, if city sizes data is missing in year  $t$ , but not in year  $t-1$ , the growth rate of a city for the period  $t/t-1$  is, however, computed by assuming to be equal to the annual average growth rate between year  $t$  and the year with the next available city sizes data. This is a reasonable assumption since it does not lead to

1  
2  
3 the introduction of new city data by interpolation. It uses only the original city size data,  
4 but it computes the growth rates with different formulas depending on the situation. First,  
5 the growth equation (1) was estimated using both pooled data and a fixed effects panel  
6 model. To capture the influence of the breakdown of the communist regime the sample is  
7 also divided in two subsamples, respectively 1970-1989 and 1990-2007. The results are  
8 reported in Table 3. The null of no fixed effects can not be rejected at the level of  
9 significance of 1% for any of the countries. Although, the results of the fixed effects  
10 model are reported for completeness, more weight should be, therefore, given to the  
11 pooled model in this case.  
12  
13

14  
15 [INSERT Table 3]  
16

17  
18 To ensure that the panels are balanced some of the cities with sparse observations  
19 were dropped. Therefore, the number of analyzed cities is 108 for Russia, 31 for Ukraine,  
20 23 for Poland, 13 for Romania, 9 for Belarus, and 6 for Bulgaria, Hungary, Former  
21 Czechoslovakia and the Baltic States. The average absolute value of the off-diagonal  
22 elements of the correlation matrix of the regression residuals varies from 31.7% for  
23 Poland to 72.6% for Romania. Also, the null hypothesis of cross-sectional independence  
24 is rejected for all the countries, implying the necessity of using Driscoll and Kraay (1998)  
25 standard errors to correct for cross sectional dependence. The results of the pooled  
26 regression indicates that, in the post-communist period, Gibrat`s law is valid in all of the  
27 countries, with some doubts in the case of Hungary. When all the sample is considered  
28 the evidence for accepting Gibrat`s law is less clear in Russia, Ukraine, Poland, and  
29 Romania. These findings are largely confirmed by the results of the non-parametrical  
30 regressions that are provided in Figure A2 in the Appendix. However, these results  
31 indicate that there is strong support for the law of proportional effect in the case of Russia  
32 and Ukraine, when the entire sample is considered.  
33  
34

35  
36 Next, the analysis turns to investigating the presence of a unit root taking into  
37 consideration the panel structure of the data. When using classical panel data techniques,  
38 the growth rates and the city sizes can be looked at as two different inputs and the  
39 procedure for filling some of the missing growth rates described above is employed.  
40 However, an even major problem arises when the unit root tests are considered. In this  
41 case, the input consists only in the city size data. Testing for a unit root in a time series  
42 with missing observations has received little attention in the econometric literature. Shin  
43 and Sarkar (1996) tested for a unit root in a AR(1) time-series using irregularly observed  
44 data and obtain the limiting distributions associated with the case where the gaps are  
45 ignored (i.e. the series are closed), and with the case where the gaps are replaced with the  
46 last available observation. They show that replacing the gaps with the last observation, or  
47 simply ignoring the gaps, does not alter the usual asymptotic results associated with DF  
48 statistics. Shin and Sarkar (1996) also investigated the finite sample properties of the two  
49 alternatives of dealing with missing observations in the case of an “A-B sampling  
50 scheme”, where A is the number of available observations and B is the number of  
51 missing observations. Their simulation results show that the unit root test performs  
52 relatively well in small samples. Shin and Sarkar (1994) investigated a unit root test for  
53 an ARIMA(0,1,q) model with irregularly observed sample and prove to have the same  
54 asymptotic distribution as the DF statistics for the complete data situation. Some  
55  
56  
57  
58  
59  
60

1  
2  
3 simulation results for the ARIMA(0,1,1) model show that the sizes of the tests for A-B =  
4 6-1, 5-2 and 4-3 were similar to those for the case where there are no missing  
5 observations (i.e. A-B=7-0).  
6

7 When dealing with time series data with missing observations, the other most  
8 common technique besides ignoring the gaps, and replacing the gaps with the last  
9 available observation, consists in filling the gaps with a linear interpolation method. It  
10 could be argued that instead of using the last available observation to fill these gaps, a  
11 linear interpolation between the known observations could provide a “smoother”  
12 alternative of dealing with gaps. However, the distributional implications of such a  
13 procedure require careful consideration, even in large samples. Giles (1999) extended the  
14 results of Shin and Sarkar (1996) and investigated the behavior of unit root tests when a  
15 linear interpolation method for dealing with the gaps in the data is employed. They prove  
16 that the limiting distribution includes an adjustment factor which results in critical values  
17 that are less negative than for the usual DF statistic. Giles (1999) also investigated the  
18 finite sample properties of the three alternatives for dealing with missing data. The  
19 findings obtained by Giles (1999) within a simulation experiment framework indicate  
20 that the unit root tests are more powerful when gaps are ignored, as compared with the  
21 other two alternatives of filling missing data. Following Giles (1999), when testing for a  
22 unit root in the case of cities over 100,000 inhabitants, the gaps are ignored. The results  
23 are reported in Table 4.  
24  
25  
26  
27

28 [INSERT Table 4]  
29

30 Again, in order to ensure a balanced panel, the analysis focuses on 108 cities in  
31 Russia, 31 in Ukraine, 23 in Poland, 13 in Romania, 9 in Belarus, and 6 for Bulgaria,  
32 Hungary, Former Czechoslovakia and the Baltic States. The unit root tests are not  
33 conducted unless at least 10 time observations are available, which is the case of Ukraine  
34 when the sample is split in the two sub-periods. When the tests indicate contradictory  
35 results, the priority is given to Pesaran (2007) test since it is robust to cross-sectional  
36 dependence. The results confirm, in general, the findings of the growth regressions. More  
37 specifically, the unit root tests indicate that, after 1989, the Gibrat's law is valid in all the  
38 countries except Russia and Ukraine. If the entire sample is considered, there is less  
39 evidence in the case of Poland and Hungary.  
40  
41

42 There is one major caveat of the regressions and of the unit root tests analyzed so  
43 far. That is the existence, after 1989, of a potential change in the deterministic component  
44 of the growth rates of the cities in the former communist bloc, at which the analysis is  
45 focused on in the next subsection.  
46  
47

#### 48 *4.3 Accounting for a potential structural break in 1989*

49

50 In most transition countries the economic and political reforms have been  
51 accompanied, at least in the first years after the fall of communism, by a rapid  
52 impoverishment of large sections of society and increasing uncertainty about the future.  
53 According to UNICEF (1994), between 1989 and 1994, marriage rates in transition  
54 countries fell by between one-quarter and one-half, birth rates shrank by up to 40 percent  
55 and death rates among male adults due to cardiovascular and violent causes often more  
56 than doubled. By 1994 the natural increase of the population had become negative in  
57  
58  
59  
60

1  
2  
3 Bulgaria, the Czech Republic, Hungary, Romania, the three Baltic States, Russia,  
4 Ukraine and Belarus. Demographic changes started in the mid 1980s or even 1970s in the  
5 case of Hungary. It should be noted that, in spite of a similar pattern of life births decline  
6 in the first decade after 1989 for the countries in the sample (excluding non-European  
7 CIS countries), only Poland demonstrates positive rate of natural population increase  
8 (excluding changes due to migration) and negative net external migration at the same  
9 time. This may indicate that as opposed to other countries, Polish formal and informal  
10 institutions were able to soften economic and social difficulties not restricting out-  
11 migration to more prosperous countries. One of the evidences of a specific institutional  
12 influence in Poland can be a negative dynamics of abortion percentage (abortion as  
13 percentage of pregnancies excluding fetal deaths/miscarriages). While in the examined  
14 transition countries abortion percentage grew after 1989, in Poland, where this indicator  
15 was lowest in the region, a tendency was opposite.

16  
17 Surprisingly, deep econometric studies of population crisis conditioning factors in  
18 transition economies are not numerous. From these factors a fertility decline is  
19 investigated more often (see a survey provided by UNECE, 2000). A notable exception is  
20 Cornia and Panicià (1998) who challenge the viewpoint that attributes the population  
21 crisis in transition economies to factors broadly unrelated to the economic and social  
22 difficulties experienced during the transition. The authors conclude that, although  
23 important demographic changes occurred in the 1970s and 80s, in three-quarters of the  
24 cases examined the after 1989 shifts in nuptiality, fertility and mortality show large,  
25 growing and statistically significant variations from past trends. Authors find little or no  
26 evidence that these drastic variations are the result of shifts toward Western models of  
27 marriage or reproductive behavior. They instead explain these variations by negative  
28 shifts in the economic circumstances of the marriageable population and of the families  
29 already formed, and in particular by the fall in real wages and rising cost of housing and  
30 other goods needed to establish and maintain a family. They are also due to the  
31 deterioration in and the modest impact of family policies on reproductive behavior. In  
32 contrast, expectations about the economic outcomes of the current crisis appear to exert a  
33 sizeable influence on the decision to marry and, particularly, to have a child. UNECE  
34 (2000) results provide ample support for the hypothesis that the declines in household  
35 incomes have put downward pressure on fertility.

36  
37 Looking for the explanation of cities population decline in the beginning of  
38 transition it is useful to bear in mind the urban sociologists' view that in the course of  
39 their evolution cities exploit not only a local site but a nodal geographical situation and  
40 develop as long as the networks they control are expanding (Pumain, 2010). Political and  
41 economic transition leads to multiple breaks in social and economic relationships. It is  
42 not unexpected then that even with large population increases in some cities due to  
43 nearby conflicts, the average metropolitan city in the former Soviet Union lost population  
44 between 1989 and 1997. For example, Moscow declined by 350,000 and St. Petersburg  
45 by more than 200,000 (Rowland, 1998). At the same time over the period from the last  
46 Soviet census in January 1989 to the beginning of 1997, the net immigration to Russia  
47 offset the negative natural increase so that Russia's population increased over the period  
48 from 147,022 ths to 148,029 ths.

49  
50 The explanation, at least partial, of this inverse population dynamics in the whole  
51 countries and their big cities could be behind the failure of industrialization policy. In  
52  
53  
54  
55  
56  
57  
58  
59  
60

1  
2  
3 contrast to non-socialist economies, where urbanization is driven largely by market  
4 forces, socialist planners accelerated the process by moving people to cities more rapidly  
5 so that forced industrialization could generate faster economic development. Chenery and  
6 Syrquin (1986) study affords to estimate that, for a given level of per capita income, the  
7 share of the population in cities in the transition region was, on average, of the order of  
8 12 percentage points higher than it was in comparator countries. Buckley and Mini  
9 (2000) stress that per capita income in 1990 was at least 40 percent lower than in  
10 countries that urbanized more spontaneously largely because the industrialization strategy  
11 failed. After command system collapse, people and firms start to take private decisions in  
12 an atmosphere of spatial competition. Unbalanced and undiversified industrial structure  
13 of socialist cities required deep structural changes and inter-industry reallocation of  
14 resources. Significant territorial adaptation and relocation of production factors among  
15 cities become a pressing task. With more freedom, workers in over-industrialized cities  
16 can, in the words of Buckley and Mini (2000), “vote with their feet” and move away from  
17 cities.  
18  
19  
20

21 First, the effect of a potential break on the previous results on the unit roots tests  
22 is investigated. Regarding unit root tests, Perron (1989) pointed out that failure to account  
23 for an existing break leads to a bias resulting in an under-rejection of the unit root null  
24 hypothesis. To overcome this problem, Perron (1989) proposed allowing for an  
25 exogenous structural break in the standard ADF tests. Following this breakthrough,  
26 several authors including, Zivot and Andrews (1992) and Perron (1997) proposed  
27 determining the break point endogenously from the data. To account for a possible break  
28 in the series, a Zivot and Andrews (1992) unit root test was conducted. For each country,  
29 the largest city and a hypothetical city with the size equal to the average city size in the  
30 respective country were investigated. The last column in Table 4 reports the results. Zivot  
31 and Andrews (1992) structural break test is a sequential test which employs the full  
32 sample and a different dummy variable for each possible break date. The break date is  
33 selected at the time where the t-statistic of the ADF test is at a minimum, therefore, where  
34 the evidence is least favorable for the unit root hypothesis. Even accounting for a  
35 potential break, the hypothesis of a unit root, in the case of the “average” city, could not  
36 be rejected for any of the countries, except Belarus. This finding provides strong  
37 evidence in favor of accepting Gibrat’s law in all the countries in the sample except  
38 Belarus.  
39  
40  
41

42 When estimating the growth regressions in the previous subsection, the sample  
43 was split in two sub-periods to account for a possible change in the fulfillment of Gibrat’s  
44 law. However, it could be argued that splitting the data into subsets may lead to a loss in  
45 efficiency due to the reduction in the sample size. Therefore, another alternative to  
46 control for a potential change in the deterministic component of the growth rates of the  
47 cities is also employed. More specifically, a dummy variable, taking the value zero before  
48 1989 and the value one afterwards, is introduced in the growth regressions. The results  
49 are reported in Table 5.  
50  
51  
52

53 [INSERT Table 5]  
54

55 The estimates of the pooled data model, which, as argued in the previous  
56 subsection, is given priority over the fixed effects model, indicate that the coefficients of  
57  
58  
59  
60



1  
2  
3 the variable accounting for a change in the deterministic component are significantly  
4 different from zero in all the countries, except Belarus. As already mentioned, the non-  
5 parametric techniques employed in this paper (Li and Racine 2003; Hayfield and Racine,  
6 2008) are appropriate for a mix of continuous and discrete data. This is convenient  
7 because it allows investigating, by means of non-parametric regression, whether the  
8 influence of discrete variables accounting for potential structural breaks is significant.  
9

10  
11 [INSERT Figure 1]  
12

13  
14 The graphs in Figure 1 depict the impact on city growth rates of the dummy  
15 variable accounting for a structural break in 1989. As it is standard in non-parametric  
16 analysis, to capture the sole influence of one variable (in this case the dummy), the other  
17 variable (in this case the relative city size) is held at the median value. The 95%  
18 distribution free (bootstrapped) error bounds, computed using 500 random samples with  
19 replacement, are also depicted. The results confirm the findings of the parametric analysis  
20 with a shift in the deterministic component detected in all the countries except Belarus.  
21

22 After the influence of the change in the deterministic component is accounted for,  
23 the null hypothesis of the validity of Gibrat's law can not be rejected at any standard level  
24 of significance for six of the analyzed countries or groups of countries, respectively  
25 Poland, Romania, Belarus, Bulgaria, Former Czechoslovakia, and the Baltic States. For  
26 Hungary the null can not be rejected at 5%, and for Russia and Ukraine it cannot be  
27 rejected at 1%.  
28

#### 29 30 4.4 *Gibrat's law using five years averages* 31

32 Another caveat of the analysis using yearly data on cities over 100,000 inhabitants  
33 is given by the existence of missing data in some of the years in the time span. As argued  
34 in the previous subsections, the treatment of missing data in this study is reasonable and  
35 the consistency of econometric methods assured. However, in order to check the  
36 robustness of the results, in this subsection the analysis is also conducted using five years  
37 averages. For the last period, 2005-2007, only three years are available and, therefore,  
38 three years averages are employed.  
39

40 To ensure that the panels are balanced some of the cities with missing  
41 observations were drooped. Therefore, the number of analyzed cities is 130 for Russia, 37  
42 for Ukraine, 25 for Poland, 15 for Romania, 9 for Belarus, 7 for Bulgaria, Hungary and  
43 the Baltic States, and 6 for Former Czechoslovakia. Because the time dimension is too  
44 low (8 periods) to use panel unit root tests, only growth regression are estimated using  
45 pooled data. The results quantifying the influence of the five year average size on the  
46 annualized growth rate are reported in Table 6.  
47

48  
49 [INSERT Table 6]  
50

51  
52 The results of the pooled regression indicates that, in the post-communist period,  
53 Gibrat's law is valid in all of the countries, with less evidence in the case of Ukraine and  
54 Hungary. When all the sample is considered Gibrat's law is rejected in Russia and  
55 Ukraine. However, this is contrary to the findings of the non-parametrical regressions,  
56  
57  
58  
59  
60

1  
2  
3 reported in Figure A3 in the Appendix, that indicate the acceptance of the proportional  
4 effect law in Russia and Ukraine in all of the three subsamples.  
5

6 Also in the case of using five years averages, the estimates from the parametric  
7 method, as well as the results of the non-parametric method (Figure A4 in the Appendix),  
8 indicate that the dummy variable accounting for a change in the deterministic component  
9 has a significant influence in all the countries. After accounting for the shift in the  
10 deterministic component, the null hypothesis of the validity of Gibrat's law can not be  
11 rejected at any standard level of significance for seven of the analyzed countries or  
12 groups of countries, respectively Poland, Romania, Belarus, Hungary, Bulgaria, Former  
13 Czechoslovakia, and the Baltic States. On the other hand, there is strong evidence against  
14 Gibrat's law in the case of Russia and Ukraine.  
15  
16

## 17 **5 Concluding Remarks**

18  
19 Most of the empirical literature investigating the dependence of growth rates of  
20 cities on their size focused mainly on advanced economies. This paper has explored the  
21 dynamics of city growth rates in twelve transition economies from the former communist  
22 bloc, namely Russia, Ukraine, Poland, Romania, Belarus, Bulgaria, Hungary, Czech  
23 Republic, Slovak Republic, Estonia, Latvia and Lithuania.  
24

25 Using both detailed city data in the period 2000-2009 for Poland, Belarus and  
26 Latvia, as well as data on cities over 100,000 inhabitants in the period 1970-2007 for all  
27 the twelve countries, the study has employed a battery of parametric and non-parametric  
28 methods to give a thorough investigation of the validity of Gibrat's law in transition  
29 economies. The methodological novelties of the paper are twofold. First, the analysis is  
30 based on parametric methods that are robust to cross-sectional dependence in the  
31 residuals. Second, the non-parametric techniques used are capable of dealing with a mix  
32 of continuous and discrete data.  
33  
34

35 The first finding concerns detailed city data in the period 2000-2009 for Poland,  
36 Belarus and Latvia. The estimates of the pooled model, using both parametric and non-  
37 parametric methods, provide evidence for the rejection of Gibrat's law in the three  
38 countries. On the other hand, when accounting for city specific effects, there is support  
39 for the acceptance of the law of proportional effect, with cities seemingly growing  
40 independent of their size. The latter evidence is also confirmed by the panel unit root  
41 tests. However, in the case of Belarus, as indicated by the non-parametric methods and  
42 confirmed by a deeper parametric analysis, there is a significant difference between the  
43 behavior of small and large cities, with the growth of large ones having a significant  
44 dependence on size. Overall, in the period 2000-2009 there is strong evidence that  
45 Gibrat's law holds for Latvia and Poland. However, at least in the short run, a divergence  
46 pattern was detected in the case of Belarus.  
47  
48

49 The other major contribution resides in the analysis conducted for cities over  
50 100,000 inhabitants using yearly data for the period 1970-2007. Two main problems had  
51 to be addressed, respectively the existence of a potential break in the deterministic  
52 component of the growth rates of the cities in the former communist bloc, and missing  
53 observations given limited availability of data. After the influence of the change in the  
54 deterministic component is accounted for, there is strong support for the validity of  
55 Gibrat's law in Poland, Romania, Belarus, Bulgaria, Former Czechoslovakia (Czech  
56 Republic, Slovak Republic), and the Baltic States (Estonia, Latvia and Lithuania), with  
57  
58  
59  
60

weaker evidence for Hungary, Russia and Ukraine. In order to ensure robustness, the analysis has also been conducted using five years averages, with the results largely confirming the findings using yearly data. In the case of Russia and Ukraine, the parametric methods detected a convergence pattern. However, this is not confirmed by the non-parametric analysis. Overall, the findings indicate that, in the long run, there is strong support for accepting Gibrat's law in Poland, Romania, Bulgaria, Former Czechoslovakia (Czech Republic, Slovak Republic), and the Baltic States (Estonia, Latvia and Lithuania), less strong support in the case of Belarus and Hungary, and weak support or even contrary evidence in the case of Russia and Ukraine.

Therefore, it can be affirmed that Gibrat's law holds for a significant part of examined transition countries indicating that the population mobility of post-communist cities is similar to previously studied developed countries. However, we can not be totally sure that the driving forces behind this proportionate growth process are the same for developed and transition countries and even that the nature of urban systems dynamics of the latter group of countries is identical. Our results show that it is a reasonable strategy to use a battery of models and tests which allowed us to prove the validity of our intuitive doubts as to proportionality of growth in relation to several countries, especially to Belarus where the intentionally designed redistribution measures are evident.

We can only agree with Eeckhout (2004) that further analysis of the data should be done, particularly of the entire size distributions over time. Thus it would be interesting for future work to examine the distribution of city sizes in transition economies, to investigate the factors that drive the variation of the distribution parameters over time, to examine for possible non-Pareto behavior using detailed city data, and to explore the "within distribution" dynamics of specific classes of cities.

## References

- Anderson, G., and Y. Ge, (2005), "The Size Distribution of Chinese Cities." *Regional Science and Urban Economics*, 35: 756-776.
- Bai J. and S. Ng, 2004, "A panic attack on unit roots and cointegration", *Econometrica*, 72, 1127-1177.
- Baltagi, B.H., (2005), *Econometric Analysis of Panel Data*, 3<sup>rd</sup> Edition, John Wiley & Sons
- Banerjee, A., (1999), "Panel Data Unit Roots and Cointegration: An Overview", in: Banerjee, A. (ed.), *Special Issue of the Oxford Bulletin of Economics and Statistics*, Oxford, 607-629.
- Black, D., and J.V. Henderson, (2003), "Urban Evolution in the USA," *Journal of Economic Geography*, 3: 343-372.
- Bosker, M., S. Brakman, H. Garretsen, and M. Schramm, (2008), "A Century of Shocks: the Evolution of the German City Size Distribution 1925 - 1999," *Regional Science and Urban Economics*, 38, 330-347.
- Brakman, S., H. Garretsen, and M. Schramm, (2004). "The Strategic Bombing of German Cities during World War II and its Impact on City Growth," *Journal of Economic Geography*, 4: 201-218.

- 1  
2  
3 Breitung J and M.H. Pesaran, (2008), Unit Roots and Cointegration in Panels”, in Matyas  
4 L. and P. Sevestre (eds.), *The Econometrics of Panel Data: Fundamentals and*  
5 *Recent Developments in Theory and Practice*, Springer, ch. 9.  
6  
7  
8 Buckley, R. M. and F. Mini, (2000), *From Commissars to Mayors. Cities in the*  
9 *Transition Economies*, Washington, DC: World Bank  
10  
11 Chenery, H., and M. Syrquin, 1986, “Typical Patterns of Transformation.” in Chenery,  
12 H. and M. Syrquin, *Industrialization and Growth: A Comparative Study*, New  
13 York: Oxford University Press.  
14  
15 Clark, J. S., and J. C. Stabler, (1991), “Gibrat's Law and the Growth of Canadian Cities,”  
16 *Urban Studies*, 28(4): 635-639.  
17  
18 Cornia, G. A. and R. Panicià (1998). The Transition's Population Crisis: Nuptiality,  
19 Fertility and Mortality Changes in Severely Distressed Economies in *Population*  
20 *and Poverty in the Developing World*, eds. G. de Santis and M. Livi Bacci,  
21 Oxford: Oxford University Press, 361-393.  
22  
23 Davis, D. R., and D. E. Weinstein, (2002), “Bones, Bombs, and Break Points: The  
24 Geography of Economic Activity,” *American Economic Review*, 92(5): 1269-  
25 1289.  
26  
27 Driscoll, J. C., and A. C. Kraay, (1998), “Consistent Covariance Matrix Estimation with  
28 Spatially Dependent Panel Data”, *Review of Economics and Statistics* 80: 549-  
29 560.  
30  
31 Eaton, J., and Z. Eckstein, (1997), “Cities and Growth: Theory and Evidence from France  
32 and Japan,” *Regional Science and Urban Economics*, 27(4- 5): 443-474.  
33  
34 Eeckhout, J., (2004), “Gibrat's Law for (All) Cities,” *American Economic Review*, 94(5):  
35 1429-1451.  
36  
37 Eeckhout, J., (2009), “Gibrat’s Law for (all) Cities: Reply”, *American Economic Review*,  
38 99, 1676-1683.  
39  
40 Gabaix, X., and Y. M. Ioannides, (2004), “The Evolution of City Size Distributions.” In  
41 J. V. Henderson and J. F. Thisse (eds.), *Handbook of Urban and Regional*  
42 *Economics*, vol. 4, 2341-2378. Amsterdam: Elsevier Science, North-Holland.  
43  
44 Gibrat, R., (1931), *Les Inégalités Économiques*, Paris: Librairie du Recueil Sirey.  
45  
46 Giesen, K. and J. Suedekum, (2010) “Zipf’s law for cities in the regions and the country,”  
47 *Journal of Economic Geography*, forthcoming.  
48  
49 Giles, D. E. A. (1999), “Testing for Unit Roots in Economic Time Series with Missing  
50 Observations”, in Fomby T. B. and R. C. Hill (eds.) *Messy Data (Advances in*  
51 *Econometrics, Volume 13)*, Emerald Group Publishing Limited, pp. 203-242  
52  
53 González-Val R., and M. Sanso-Navarro, (2010), „Gibrat’s law for countries”, *Journal of*  
54 *Population Economics*, 23(4), 1371-1389  
55  
56 Gonzalez-Val, R., L. Lanaspa, and F. Sanz, (2008), “New Evidence on Gibrat’s Law for  
57 Cities”, *MPRA Paper*, 10411.  
58  
59  
60

- 1  
2  
3 Guérin-Pace, F., (1995), "Rank-Size Distribution and the Process of Urban Growth."  
4 *Urban Studies*, 32(3): 551-562.
- 6 Hardle, W., (1992), "Applied Nonparametric Regression," in *Econometric Society*  
7 *Monographs*, Cambridge University Press.
- 9 Hausman, J., (1978), "Specification tests in econometrics", *Econometrica*, 46, 1251–  
10 1271.
- 12 Hayfield T. and J.S. Racine, (2008), "Nonparametric Econometrics: The np Package."  
13 *Journal of Statistical Software*, 27(5).
- 15 Henderson, J.V. and H.G. Wang, (2007), "Urbanization and city growth: the role of  
16 institutions", *Regional Science and Urban Economics*, 37, 283–313
- 18 Hoechle, D., (2007), "Robust Standard Errors for Panel Regressions with Cross-Sectional  
19 Dependence", *The Stata Journal*, 7, 3, 281-312
- 21 Hurvich C.M., J.S. Simonoff and C.L. Tsai, (1998), "Smoothing Parameter Selection in  
22 Nonparametric Regression using an improved Akaike information criterion",  
23 *Journal of the Royal Statistical Society Series B*, 60, 271–293.
- 25 Im, K. S., Pesaran, M. and Y. Shin, (2003). „Testing for unit roots in heterogeneous  
26 panels,” *Journal of Econometrics*, 115, 53-74.
- 28 Ioannides, Y. M., and H. G. Overman, (2003), "Zipf's Law for Cities: an Empirical  
29 Examination," *Regional Science and Urban Economics*, 33: 127-137.
- 31 Levin, A., C. F. Lin, and C. Chu, (2002), „Unit Root Tests in Panel Data: Asymptotic and  
32 Finite-Sample Properties”, *Journal of Econometrics*, 108, 1–24.
- 34 Li Q. and J.S. Racine, (2003), "Nonparametric Estimation of Distributions with  
35 Categorical and Continuous Data," *Journal of Multivariate Analysis*, 86, 266–  
36 292.
- 37 Li, Q. and J.S. Racine, (2007), *Nonparametric Econometrics: Theory and Practice*.  
38 Princeton University Press.
- 40 Moon H.R. and B. Perron, 2004, „Testing for unit root in panels with dynamic factors.”  
41 *Journal of Econometrics*, 122, 81–126.
- 43 Nadaraya, E. A., (1964), "On Estimating Regression", *Theory of Probability and its*  
44 *Applications*, 9, 141–142.
- 46 Nadaraya, E. A., (1965). "On Nonparametric Estimates of Density Functions and  
47 regression curves." *Theory of Applied Probability*, 10, 186–190.
- 49 Necula, C., M. Ibragimov, U. Valetka, G. Bobeica, A-N. Radu, K. Mukhamedkhanova,  
50 A. Radyna, (2010), "City Size Distribution Dynamics in Transition Economies. A  
51 Cross-Country Investigation", GDN Working Paper
- 53 Newey, W. K., and K. D. West, (1987), „A simple, positive semi-definite,  
54 heteroskedasticity and autocorrelation consistent covariance matrix”,  
55 *Econometrica* 55: 703–708.
- 56  
57  
58  
59  
60



- 1  
2  
3 Perron, P. (1989), "The great crash, the oil price shock, and the unit root hypothesis",  
4 *Econometrica*, 57, pp.1361-1401.
- 6 Perron, P. (1997), "Further Evidence on Breaking Trend Functions in Macroeconomic  
7 Variables", *Journal of Econometrics*, 80 (2), pp.355-385.
- 9 Pesaran, M.H., (2004), "General diagnostic tests for cross section dependence in panels",  
10 *CESifo Working Paper Series*, no 1229.
- 12 Pesaran, M.H., (2007), "A simple panel unit root test in the presence of cross-section  
13 dependence", *Journal of Applied Econometrics*, 22, 2, 265–312.
- 15 Petrakos, G., P. Mardakis, and H. Caraveli, (2000), "Recent Developments in the Greek  
16 System of Urban Centres," *Environment and Planning B: Planning and Design*,  
17 27(2): 169-181.
- 19 Pumain, D. (2010), "Urban systems", in Hutchison R. (ed.), *Encyclopedia of Urban  
20 Studies*, Sage Publications.
- 22 Resende, M., (2004), "Gibrat's Law and the Growth of Cities in Brazil: A Panel Data  
23 Investigation," *Urban Studies*, 41(8): 1537-1549.
- 25 Rowland, R. H., (1998), "Metropolitan Population Change in Russia and the Former  
26 Soviet Union, 1897-1997", *Post-Soviet Geography and Economics* 39(5):271-  
27 296.
- 29 Shin, D.W. and S. Sarkar, (1994), „ Unit root tests for ARIMA(0, 1, q) models with  
30 irregularly observed samples", *Statistics & Probability Letters*, 19(3), 189-194
- 32 Shin, D.W. and S. Sarkar, (1996), „Testing for a unit root in a AR(1) time series using  
33 irregularly observed data", *Journal of Times Series Analysis*, 17(3), 309–321
- 35 Silverman B., (1986), *Density Estimation for Statistics and Data Analysis*, New York:  
36 Chapman and Hall.
- 37 Soo, K.T., (2007), "Zipf's Law and Urban Growth in Malaysia," *Urban Studies*, 44(1), 1-  
38 14.
- 40 Stanilov, K. (2007), "The restructuring of non-residential uses in the post-socialist  
41 metropolis", in K. Stanilov (ed.) *The post-socialist city: urban form and space  
42 transformations in Central and Eastern Europe after socialism*. Dordrecht:  
43 Springer, pp. 73–97.
- 45 Watson, G.S., (1964). "Smooth Regression Analysis." *Sankhya*, 26:15, 359–372.
- 47 White, H., (1980), „A heteroskedasticity-consistent covariance matrix estimator and a  
48 direct test for heteroskedasticity" *Econometrica* 48(4): 817–838.
- 50 Wooldridge, J. M., (2001), *Econometric Analysis of Cross Section and Panel Data*, MIT  
51 Press.
- 53 Zivot, E. and K. Andrews, (1992), "Further Evidence on the Great Crash, the Oil Price  
54 Shock, and the Unit Root Hypothesis", *Journal of Business and Economic  
55 Statistics*, 10 (10), pp. 251–70.
- 56  
57  
58  
59  
60

1  
2  
3  
4  
5  
6  
7  
8  
9  
10  
11  
12  
13  
14  
15  
16  
17  
18  
19  
20  
21  
22  
23  
24  
25  
26  
27  
28  
29  
30  
31  
32  
33  
34  
35  
36  
37  
38  
39  
40  
41  
42  
43  
44  
45  
46  
47  
48  
49  
50  
51  
52  
53  
54  
55  
56  
57  
58  
59  
60

\*\*\*, UNECE, (2000), Fertility decline in the transition economies, 1989-1998. Economic and social factors revisited. Economic Survey of Europe 2000, No.1. Economic Commission for Europe, UN New York and Geneva.

\*\*\*, UNICEF (1994), *Central and Eastern Europe in Transition: Public Policy and Social Conditions: Crisis in Mortality, Health and Nutrition*, UNICEF, Economies in Transition Studies, Regional Monitoring Report No.2, August 1994.

### Appendix

[INSERT Table A.1]

[INSERT Table A.2]

[INSERT Figure A.1]

[INSERT Figure A.2]

[INSERT Figure A.3]

[INSERT Figure A.4]

**Table 1.** Number of cities over 100,000 inhabitants in the period 1970 – 2007 in the Eastern European countries in the sample

		average	min	max
1	Belarus	12	9	15
2	Bulgaria	8	4	10
3	Czech Republic	6	4	8
4	Estonia	2	1	2
5	Hungary	8	6	9
6	Latvia	2	2	3
7	Lithuania	4	3	5
8	Poland	37	23	43
9	Romania	21	13	26
10	Russian Federation	152	127	163
11	Slovak Republic	2	2	2
12	Ukraine	45	39	51

**Table 2.** Results for detailed city data in Poland, Belarus and Latvia

	Poland	Belarus	Latvia
ln(Size)	-0.0011	0.0029	0.0006
<i>pooled</i>	[0.0001] (0.0000)	[0.0004] (0.0000)	[0.0003] (0.0550)
ln(Size)	-0.0063	-0.0827	-0.1423
<i>fixed effects</i>	[0.0076] (0.4030)	[0.0475] (0.0880)	[0.0770] (0.0750)
ACSC	0.3180	0.3900	0.3410
PCS	34.6650 (0.0000)	24.2510 (0.0000)	7.6140 (0.0000)
HWH	25.0400 (0.0000)	27.7400 (0.0000)	9.1400 (0.0053)
URLLC	-0.0026 (0.4989)	-0.6400 (0.2610)	-3.2343 (0.0006)
URIPS	10.8370 (1.0000)	4.5420 (1.0000)	1.4160 (0.9220)
URPCS	-0.0060 (0.4980)	-0.6400 (0.2610)	-0.3220 (0.3740)

Driscoll - Kraay robust standard errors are reported in squared parentheses; p-values are reported in round parentheses; ACSC is the average absolute value of the off-diagonal elements of the correlation matrix of the regression residuals; PCS is the Pesaran (2004) cross-section independence test; HWH is the modified Hausman (1978) test; URLLC, URIPS, URPCS are Levin et al (2002), Im et al (2003) and Pesaran (2007) panel unit root tests; the transformed t statistics are reported for the unit root tests

**Table 3.** Growth regressions results for cities over 100,000 inhabitants for the period 1970-2007

		Pooled regression			HWH	Fixed effects regression			ACSC	PCS	
		estim.	std. err.	p-value		estim.	std. err.	p-value		statistic	p-value
Russia	all sample	-0.0060	0.0027	0.0265	5.7100	-0.2052	0.0655	0.0022	0.3800	100.58	0.0000
	before 1989	-0.0036	0.0010	0.0003	(0.0186)	-0.1499	0.0633	0.0196	0.6350	135.03	0.0000
	after 1989	-0.0065	0.0044	0.1418		-0.4061	0.0591	0.0000	0.4910	38.66	0.0000
Ukraine	all sample	-0.0094	0.0039	0.0231	6.3300	-0.1645	0.0563	0.0065	0.5050	41.63	0.0000
	before 1989	-0.0046	0.0020	0.0269	(0.0175)	-0.0715	0.0080	0.0000	0.3680	9.91	0.0000
	after 1989	-0.0114	0.0078	0.1560		-0.3873	0.0524	0.0000	0.6920	41.56	0.0000
Poland	all sample	-0.0031	0.0015	0.0443	4.4200	-0.0859	0.0239	0.0016	0.3170	23.14	0.0000
	before 1989	-0.0042	0.0014	0.0085	(0.0472)	-0.0676	0.0288	0.0282	0.2620	11.35	0.0000
	after 1989	0.0008	0.0019	0.6617		-0.1881	0.1236	0.1423	0.5280	15.65	0.0000
Romania	all sample	-0.0065	0.0023	0.0146	8.0600	-0.0741	0.0249	0.0117	0.7260	21.27	0.0000
	before 1989	-0.0048	0.0017	0.0176	(0.0149)	-0.0241	0.0234	0.3242	0.7990	26.39	0.0000
	after 1989	0.0013	0.0008	0.1614		-0.0924	0.0426	0.0510	0.7490	33.06	0.0000
Belarus	all sample	-0.0053	0.0034	0.1524	2.8500	-0.1516	0.0867	0.1186	0.5500	16.42	0.0000
	before 1989	-0.0101	0.0067	0.1695	(0.1299)	-0.2295	0.1360	0.1300	0.7660	12.84	0.0000
	after 1989	-0.0001	0.0018	0.9644		-0.4539	0.1107	0.0034	0.4370	8.55	0.0000
Bulgaria	all sample	-0.0016	0.0026	0.5666	0.6500	-0.0635	0.0174	0.0148	0.3450	5.77	0.0000
	before 1989	-0.0015	0.0032	0.6482	(0.4576)	-0.0470	0.0099	0.0051	0.3830	4.59	0.0000
	after 1989	0.0013	0.0037	0.7402		-0.2676	0.0599	0.0066	0.4050	2.04	0.0416
Hungary	all sample	-0.0046	0.0018	0.0515	5.7800	-0.1440	0.0433	0.0209	0.5300	12.10	0.0000
	before 1989	-0.0052	0.0029	0.1403	(0.0613)	-0.1994	0.0339	0.0020	0.2730	3.23	0.0012
	after 1989	-0.0040	0.0014	0.0353		-0.0859	0.0764	0.3121	0.7070	11.62	0.0000
Fr. Czechosl.	all sample	-0.0040	0.0021	0.1214	3.0200	-0.0874	0.0289	0.0293	0.6580	12.49	0.0000
	before 1989	-0.0068	0.0021	0.0234	(0.1430)	-0.0540	0.0347	0.1803	0.6430	8.63	0.0000
	after 1989	0.0010	0.0009	0.3523		-0.0909	0.0537	0.1514	0.5350	7.18	0.0000
Baltic States	all sample	-0.0030	0.0014	0.0888	5.2600	-0.0953	0.0188	0.0039	0.6240	13.46	0.0000
	before 1989	-0.0014	0.0011	0.2796	(0.0703)	-0.0508	0.0047	0.0001	0.2050	2.51	0.0122
	after 1989	-0.0021	0.0016	0.2510		-0.0359	0.0253	0.2162	0.3500	4.41	0.0000

std. err. are Driscoll - Kraay robust standard errors; ACSC is the average absolute value of the off-diagonal elements of the correlation matrix of the regression residuals of the fixed effects model; PCS is the Pesaran (2004) cross-section independence test; HWH is the modified Hausman (1978) test for the case when all the sample is considered; p-values are reported in round parentheses.

**Table 4.** Unit root tests results for cities over 100,000 inhabitants for the period 1970-2007

		URLLC		URIPS		URPCS		ZA	
		statistic	pvalue	statistic	pvalue	statistic	p-value	statistic	bkp.
Russia	all sample	-10.5586	0.0000	-6.5340	0.0000	2.3070	0.9890	Russia	
	before 1989	-27.8783	0.0000	-10.7660	0.0000	-0.9860	0.1620	average	-3.8670 1999
	after 1989	-12.1703	0.0000	-4.9730	0.0000	-6.6840	0.0000	max	-4.5920 2002
Ukraine	all sample	-2.5530	0.0053	0.9990	0.8410	1.0150	0.8450	Ukraine	
	before 1989	-	-	-	-	-	-	average	-4.1640 1993
	after 1989	-	-	-	-	-	-	max	-6.0970*** 1985
Poland	all sample	-4.0467	0.0000	-1.6410	0.0500	-1.3670	0.0860	Poland	
	before 1989	-4.6524	0.0000	-0.6220	0.2670	-0.7110	0.2390	average	-4.2310 1987
	after 1989	-5.9089	0.0000	0.1470	0.5580	0.0350	0.5140	max	-3.5700 1990
Romania	all sample	-3.9243	0.0000	-2.2200	0.0130	-2.7190	0.0030	Romania	
	before 1989	-1.1504	0.1250	1.5330	0.9370	-2.0380	0.0210	average	-3.2650 1981
	after 1989	0.1505	0.5598	-0.8680	0.1930	1.3510	0.9120	max	-1.9660 1995
Belarus	all sample	-4.5845	0.0000	-3.5480	0.0000	-0.8670	0.1930	Belarus	
	before 1989	-4.0950	0.0000	-0.3580	0.3600	-2.0620	0.0200	average	-5.5840*** 1989
	after 1989	-2.2261	0.0130	-0.0920	0.4630	1.0640	0.8560	max	-34.1120*** 1999
Bulgaria	all sample	-0.8885	0.1871	-0.4400	0.3300	-1.0940	0.1370	Bulgaria	
	before 1989	-0.6097	0.2710	0.5820	0.7200	-1.0400	0.1490	average	-3.8340 1984
	after 1989	2.8549	0.9978	3.1260	0.9990	-0.6410	0.2610	max	-4.5170 1978
Hungary	all sample	-2.6283	0.0043	-5.2390	0.0000	-2.9440	0.0020	Hungary	
	before 1989	-6.7794	0.0000	-6.0500	0.0000	-3.5510	0.0000	average	-4.7470 1978
	after 1989	-2.2863	0.0111	-1.4060	0.0800	-0.7280	0.2330	max	-4.2150 1994
Fr. Czechosl.	all sample	-6.1552	0.0000	-4.6060	0.0000	-0.9050	0.1830	Fr. Czechosl	
	before 1989	-1.7602	0.0392	0.8580	0.8040	-0.2510	0.4010	average	-3.1240 1985
	after 1989	-2.8482	0.0022	-0.4750	0.3180	-1.0010	0.1580	max	-2.0380 1997
Baltic States	all sample	-1.2091	0.1133	1.0560	0.8540	1.1210	0.8690	Baltic States	
	before 1989	-0.4943	0.3105	0.9690	0.8340	-1.2810	0.1000	average	-4.2770 1982
	after 1989	-4.5589	0.0000	-2.0140	0.0220	0.6400	0.7390	max	-2.8640 1993

URLLC is the Levin et al (2002) panel unit root test; URIPS is the Im et al (2003) panel unit root test; URPCS is the Pesaran (2007) panel unit root test; the transformed t statistics are reported for the panel unit root tests; ZA is the Zivot and Andrews (1992) unit root test with structural breaks, bkp. indicates the year a breakpoint was detected ; \*, \*\* and \*\*\* denotes statistical significance at 10%, 5% and 1% level .

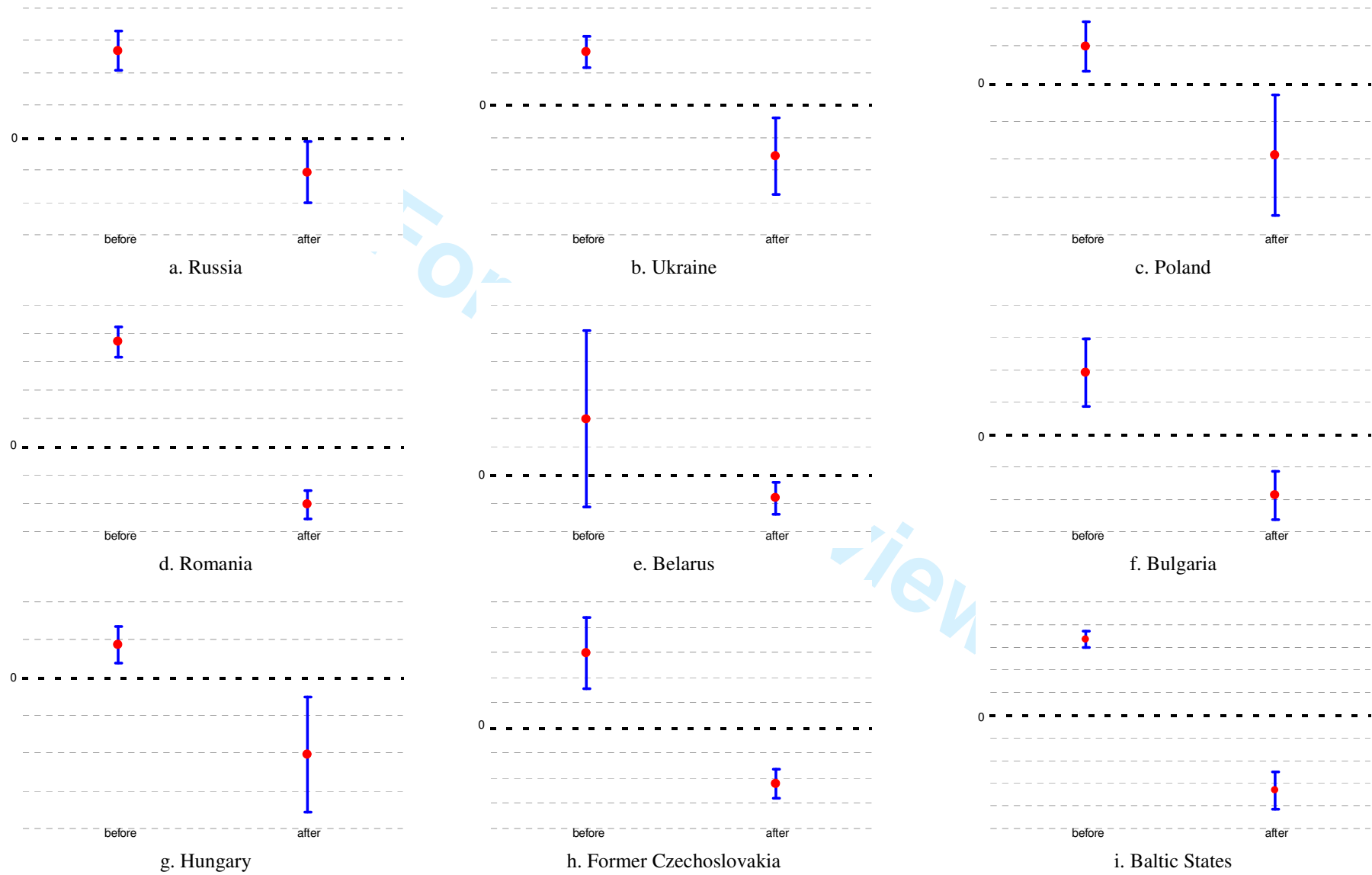


**Table 5.** *Structural breaks in the growth regressions for cities over 100,000 inhabitants for the period 1970-2007*

Pooled regression									
	Russia	Ukraine	Poland	Romania	Belarus	Bulgaria	Hungary	Fr. Czechosl.	Baltic States
ln(Size)	-0.0054	-0.0078	-0.0023	-0.0016	-0.0034	0.0002	-0.0045	-0.0031	-0.0017
	[0.0027]	[0.0038]	[0.0014]	[0.0012]	[0.0029]	[0.0023]	[0.0018]	[0.0018]	[0.0009]
	(0.0491)	(0.0473)	(0.1109)	(0.2316)	(0.2764)	(0.9261)	(0.0548)	(0.1460)	(0.1294)
postcom	-0.0156	-0.0256	-0.0156	-0.0302	-0.0167	-0.0210	-0.0218	-0.0152	-0.0269
	[0.0035]	[0.0084]	[0.0030]	[0.0078]	[0.0096]	[0.0042]	[0.0051]	[0.0037]	[0.0028]
	(0.0000)	(0.0047)	(0.0000)	(0.0022)	(0.1190)	(0.0040)	(0.0079)	(0.0096)	(0.0002)
Fixed effects regression									
	Russia	Ukraine	Poland	Romania	Belarus	Bulgaria	Hungary	Fr. Czechosl.	Baltic States
ln(Size)	-0.2144	-0.1549	-0.0683	-0.0296	-0.2122	-0.0332	-0.1378	-0.0631	-0.0424
	[0.0708]	[0.0605]	[0.0236]	[0.0206]	[0.1217]	[0.0199]	[0.0336]	[0.0276]	[0.0074]
	(0.0031)	(0.0157)	(0.0084)	(0.1760)	(0.1193)	(0.1552)	(0.0093)	(0.0707)	(0.0023)
postcom	0.0063	-0.0057	-0.0100	-0.0232	0.0347	-0.0152	-0.0206	-0.0096	-0.0234
	[0.0092]	[0.0090]	[0.0018]	[0.0072]	[0.0235]	[0.0051]	[0.0037]	[0.0024]	[0.0021]
	(0.4962)	(0.5324)	(0.0000)	(0.0073)	(0.1785)	(0.0307)	(0.0024)	(0.0097)	(0.0001)
ACSC	0.3850	0.5010	0.2230	0.7930	0.5470	0.3280	0.3590	0.6080	0.3240
PCS	102.1650	40.8250	13.1820	34.9980	15.8190	5.2890	8.1830	11.5450	6.1380
	(0.0000)	(0.0000)	(0.0000)	(0.0000)	(0.0000)	(0.0000)	(0.0000)	(0.0000)	(0.0000)

postcom is a dummy variable taking the value zero before 1989 and the value one afterwards; Driscoll - Kraay robust standard errors are reported in squared parentheses; p-values are reported in round parentheses; ACSC is the average absolute value of the off-diagonal elements of the correlation matrix of the regression residuals of the fixed effects model; PCS is the Pesaran (2004) cross-section independence test

Figure 1. The non-parametrical estimates of the potential shift after 1989 in the deterministic component of growth rates



**Table 6.** Growth regressions results for cities over 100,000 inhabitants using five years averages for the period 1970-2007

		Pooled regression			Pooled regression with dummy			
		all sample	before 1989	after 1989	all sample			
Russia	ln(Size)	-0.0023 [0.0008] (0.0034)	-0.0020 [0.0003] (0.0000)	-0.0006 [0.0004] (0.1618)	ln(Size)	-0.0012 [0.0005] (0.0097)	postcom [0.0034] (0.0000)	-0.0175 [0.0034] (0.0000)
Ukraine	ln(Size)	-0.0072 [0.0019] (0.0004)	-0.0057 [0.0010] (0.0000)	-0.0050 [0.0023] (0.0387)	ln(Size)	-0.0053 [0.0013] (0.0002)	postcom [0.0047] (0.0001)	-0.0212 [0.0047] (0.0001)
Poland	ln(Size)	-0.0032 [0.0025] (0.2127)	-0.0058 [0.0011] (0.0000)	0.0013 [0.0013] (0.3107)	ln(Size)	-0.0019 [0.0022] (0.3946)	postcom [0.0041] (0.0005)	-0.0166 [0.0041] (0.0005)
Romania	ln(Size)	-0.0087 [0.0041] (0.0536)	-0.0090 [0.0008] (0.0000)	0.0010 [0.0008] (0.2599)	ln(Size)	-0.0036 [0.0026] (0.1817)	postcom [0.0087] (0.0029)	-0.0314 [0.0087] (0.0029)
Belarus	ln(Size)	-0.0032 [0.0018] (0.1159)	0.0000 [0.0031] (0.9969)	0.0026 [0.0015] (0.1282)	ln(Size)	0.0015 [0.0010] (0.1467)	postcom [0.0031] (0.0000)	-0.0287 [0.0031] (0.0000)
Bulgaria	ln(Size)	-0.0001 [0.0013] (0.9265)	0.0001 [0.0011] (0.9256)	0.0019 [0.0034] (0.5956)	ln(Size)	0.0021 [0.0018] (0.2939)	postcom [0.0037] (0.0049)	-0.0159 [0.0037] (0.0049)
Hungary	ln(Size)	-0.0002 [0.0008] (0.8148)	-0.0035 [0.0008] (0.0088)	0.0006 [0.0002] (0.0242)	ln(Size)	-0.0008 [0.0010] (0.4320)	postcom [0.0036] (0.0099)	-0.0133 [0.0036] (0.0099)
Fr. Czechosl.	ln(Size)	-0.0039 [0.0023] (0.1525)	-0.0068 [0.0011] (0.0017)	0.0005 [0.0005] (0.3546)	ln(Size)	-0.0028 [0.0020] (0.2157)	postcom [0.0039] (0.0125)	-0.0148 [0.0039] (0.0125)
Baltic States	ln(Size)	-0.0028 [0.0008] (0.0121)	-0.0011 [0.0004] (0.0389)	-0.0014 [0.0014] (0.3406)	ln(Size)	-0.0013 [0.0008] (0.1426)	postcom [0.0040] (0.0015)	-0.0218 [0.0040] (0.0015)

postcom is a dummy variable taking the value zero before 1989 and the value one afterwards; Driscoll - Kraay robust standard errors are reported in squared parentheses; p-values are reported in round parentheses.

**Table A.1** Summary statistics of the data employed in testing the validity of Gibrat's Law

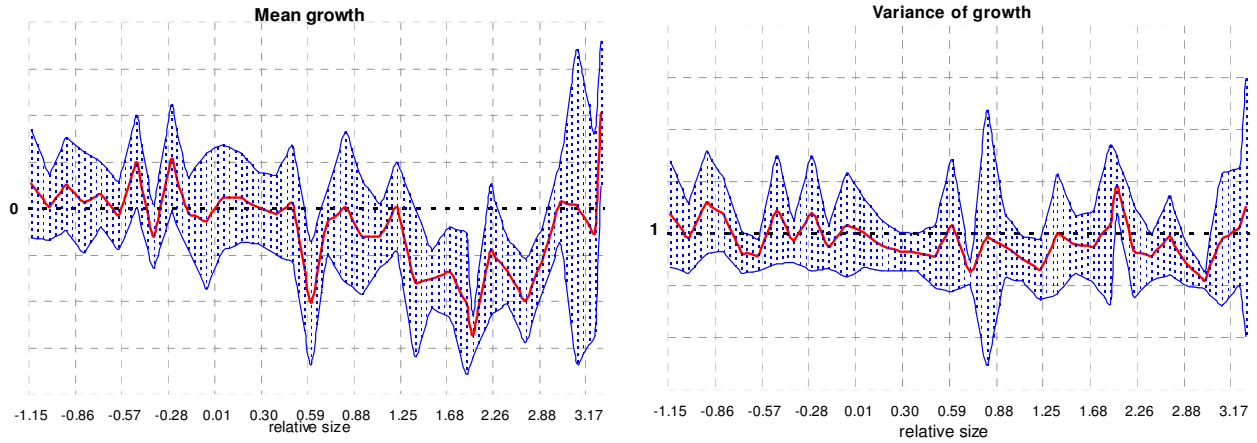
	Data on cities over 100,000 inhabitants									Detailed city data			
	Russia	Ukraine	Poland	Romania	Belarus	Bulgaria	Hungary	Fr. Czechosl.	Baltic States	Poland	Belarus	Latvia	
no. obs.	3644	741	995	554	351	226	313	197	260	no. obs.	2000	500	300
period	1970 - 2007	1970 - 2007	1970 - 2007	1970 - 2007	1970 - 2007	1970 - 2007	1970 - 2007	1970 - 2007	1970 - 2007	period	2000-2009	2000-2009	2000-2009
T dim.	24	17	27	26	27	28	38	25	32	T dim.	10	10	10
CS dim.	164	51	43	26	15	11	9	10	9	CS dim.	200	50	30
Average	416,797	401,355	285,662	281,715	321,515	297,009	370,851	360,179	331,561	Average	90,701	120,767	48,314
Std. dev.	816,582	437,791	282,120	368,143	378,803	300,340	594,286	330,581	235,663	Std. dev.	159,557	255,850	130,224
Min	90,000	100,000	96,648	99,494	91,300	96,099	100,100	94,436	100,431	Min	21,710	15,100	7,943
Max	10,456,490	2,676,789	1,704,717	2,127,194	1,797,500	1,155,403	2,116,548	1,216,568	917,000	Max	1,709,781	1,829,100	766,381

**Table A.2** Growth regression results using detailed city data in Belarus for the period 2000-2009

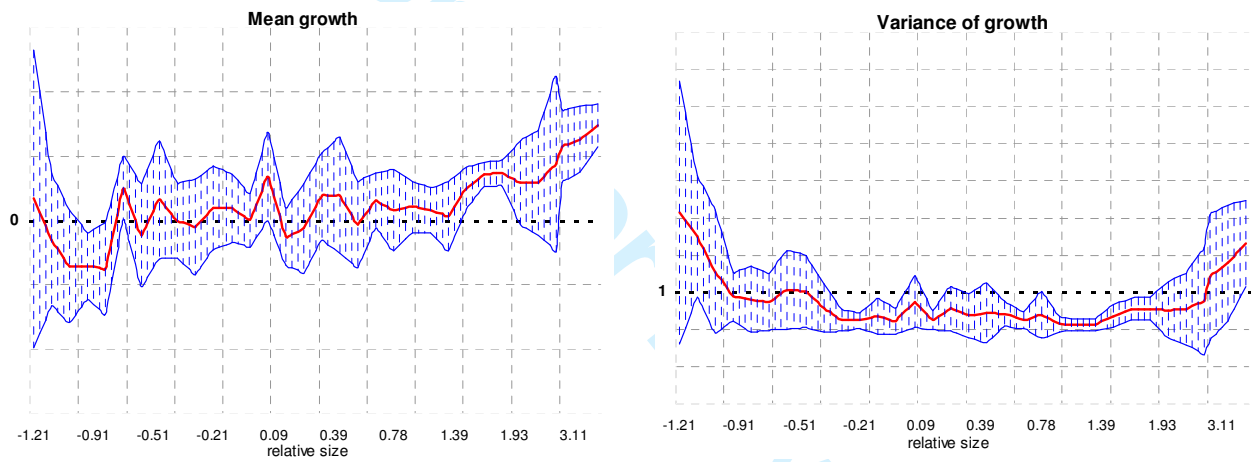
	all sample	large cities	medium cities	small cities
ln(Size)	0.0015	0.0030	0.0006	0.0085
	[0.0008]	[0.0007]	[0.0008]	[0.0064]
	(0.0461)	(0.0043)	(0.4438)	(0.2062)
d_medium	-0.0035			
	[0.0016]			
	(0.0287)			
d_small	-0.0050			
	[0.0014]			
	(0.0011)			
HWH		7.8100	0.7600	1.7900
		(0.0267)	(0.3900)	(0.2028)

d\_medium is a dummy variable controlling for medium cities and d\_small a dummy variable controlling for small ones; Driscoll - Kraay robust standard errors are reported in squared parentheses; p-values are reported in round parentheses; HWH is the modified Hausman (1978) test.

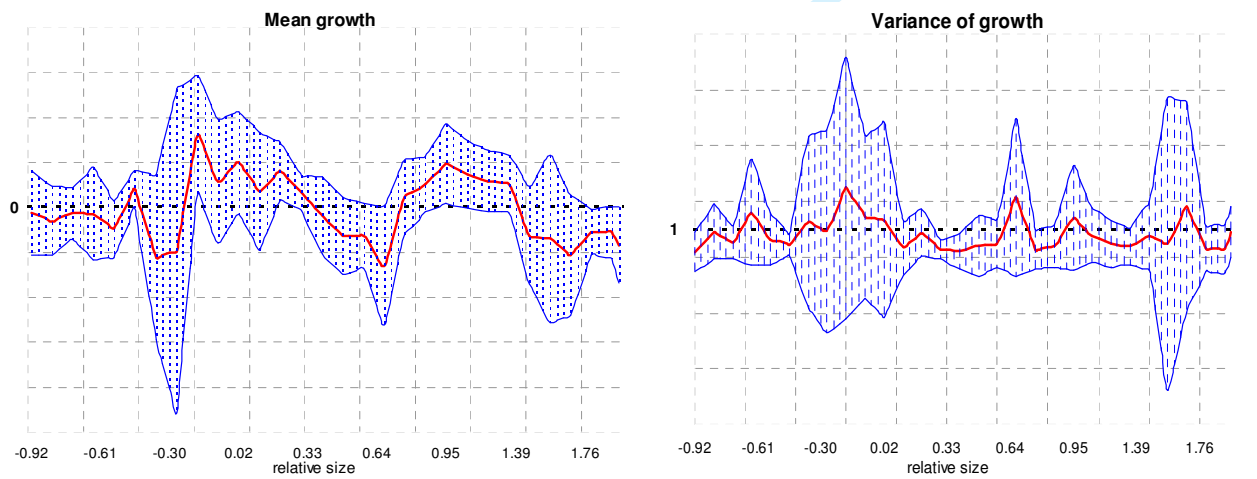
Figure A.1. Non-parametric estimation using detailed city data in Poland, Belarus and Latvia for the period 2000-2009



a. Poland

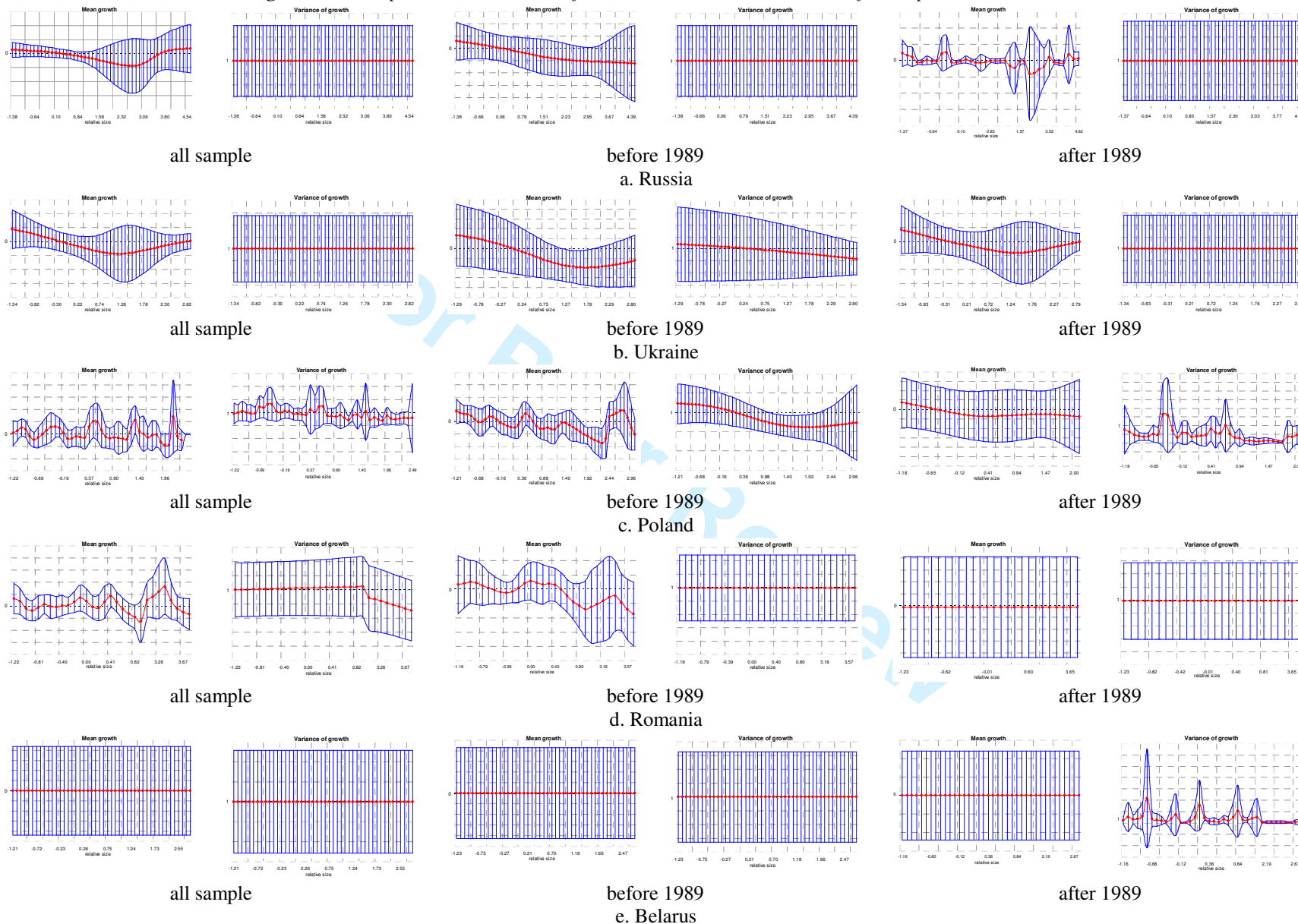


b. Belarus



c. Latvia

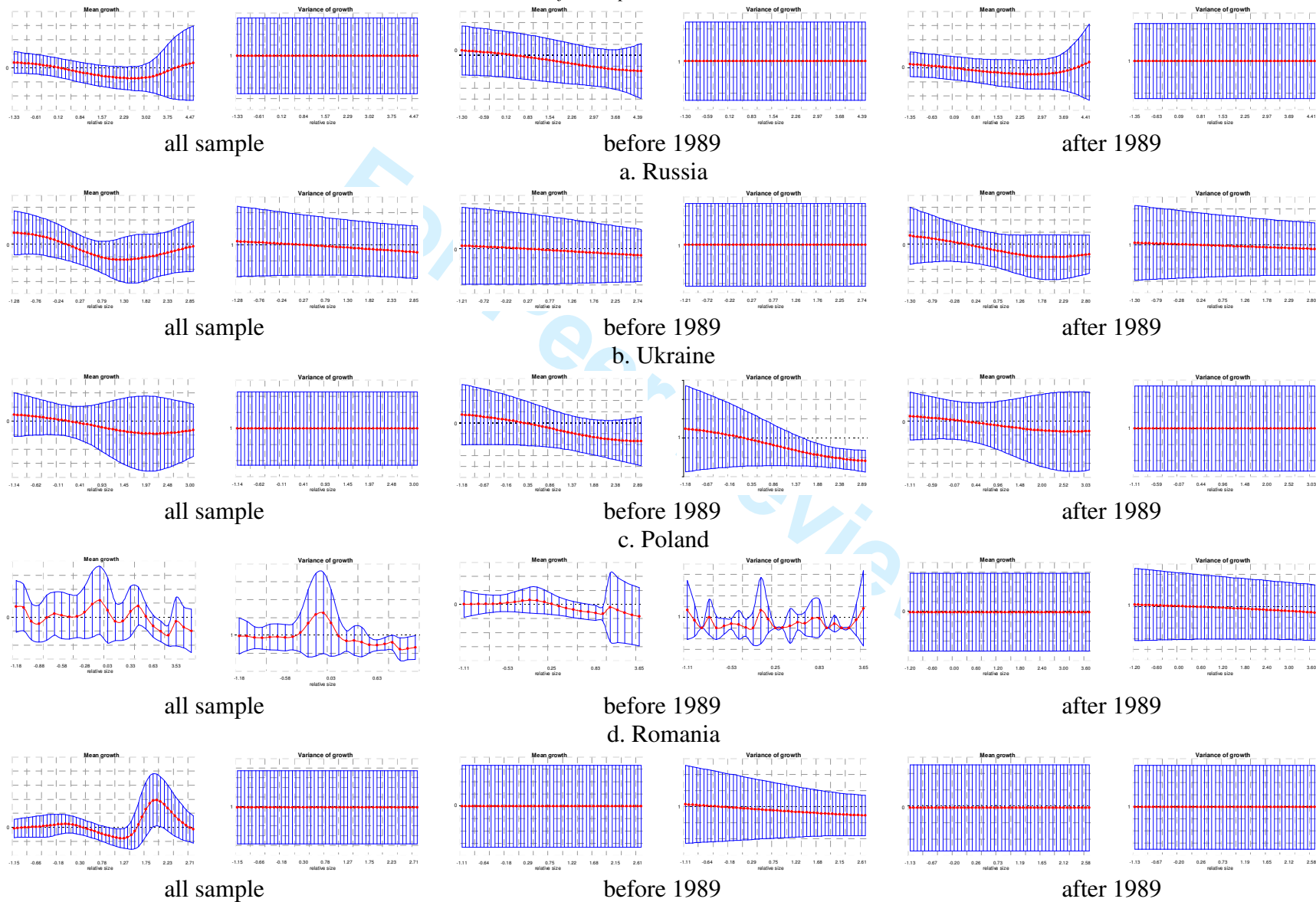
Figure A.2. Non-parametric estimation for cities over 100,000 inhabitants for the period 1970-2007







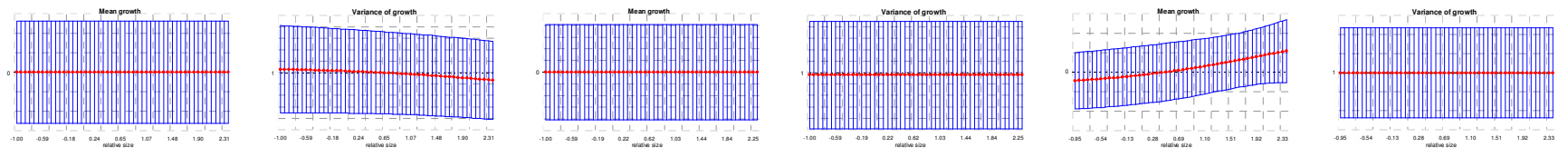
**Figure A.3.** *Non-parametric estimation for cities over 100,000 inhabitants using five years averages for the period 1970-2007*



1  
2  
3  
4  
5  
6  
7  
8  
9  
10  
11  
12  
13  
14  
15  
16  
17  
18  
19  
20  
21  
22  
23  
24  
25  
26  
27  
28  
29  
30  
31  
32  
33  
34  
35  
36  
37  
38  
39  
40  
41  
42  
43  
44  
45  
46  
47  
48  
49

1  
2  
3  
4  
5  
6  
7  
8  
9  
10  
11  
12  
13  
14  
15  
16  
17  
18  
19  
20  
21  
22  
23  
24  
25  
26  
27  
28  
29  
30  
31  
32  
33  
34  
35  
36  
37  
38  
39  
40  
41  
42  
43  
44  
45  
46  
47  
48  
49

e. Belarus

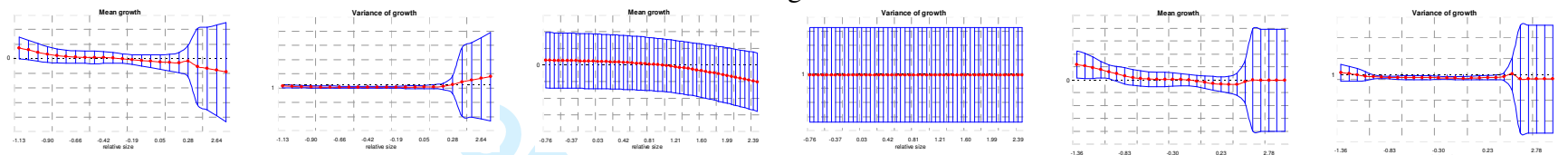


all sample

before 1989

after 1989

f. Bulgaria

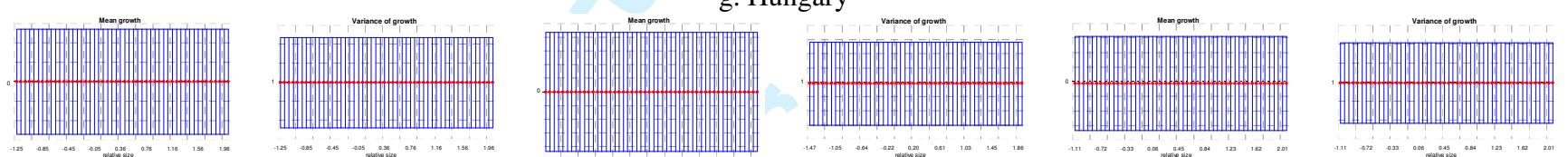


all sample

before 1989

after 1989

g. Hungary

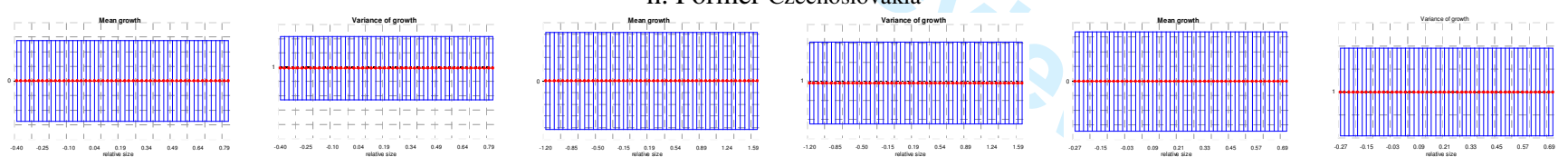


all sample

before 1989

after 1989

h. Former Czechoslovakia



all sample

before 1989

after 1989

i. Baltic States

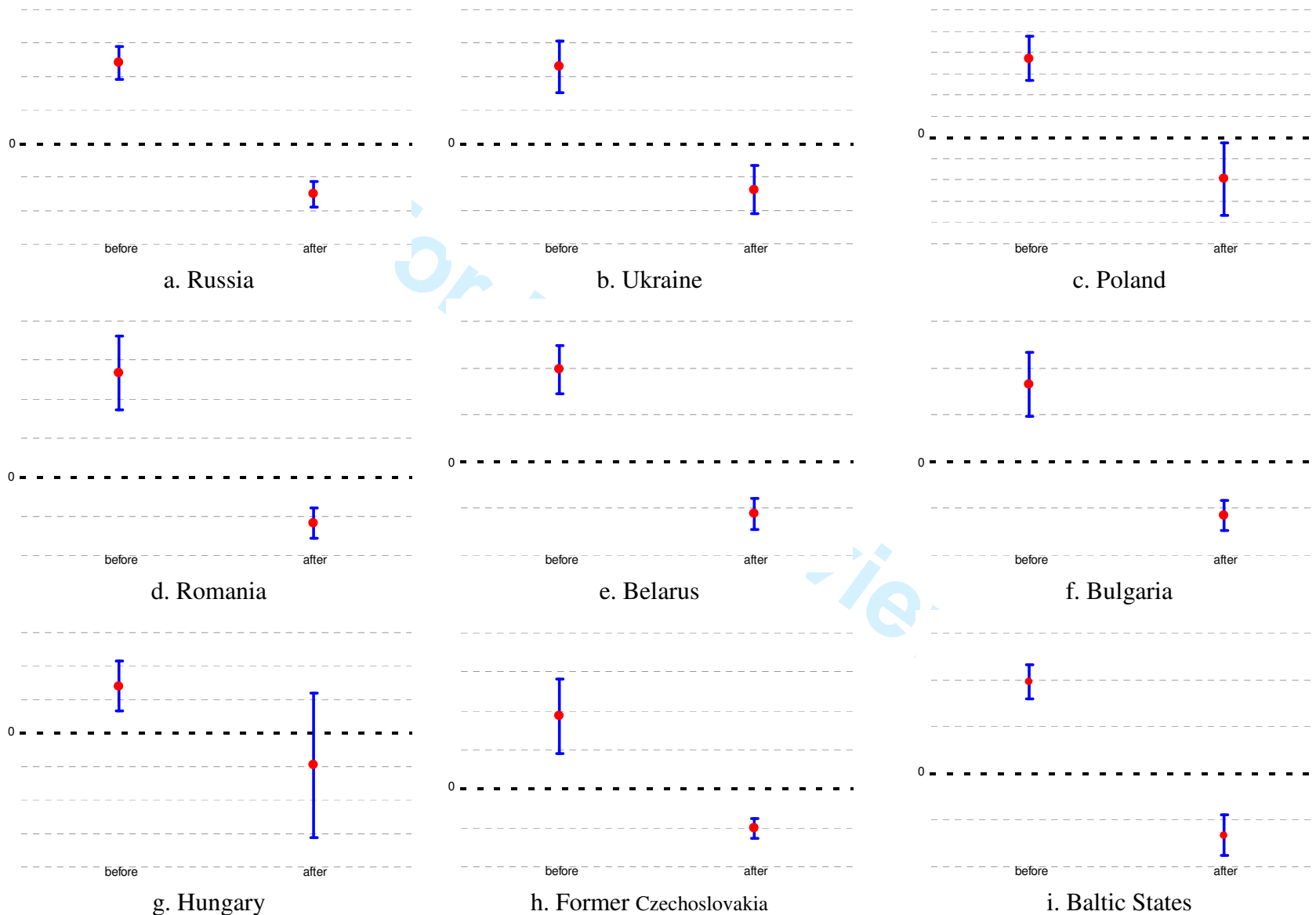


all sample

before 1989

after 1989

**Figure A.4.** *The non-parametrical estimates of the potential shift after 1989 in the deterministic component of growth rates using five years averages*



1  
2  
3  
4  
5  
6  
7  
8  
9  
10  
11  
12  
13  
14  
15  
16  
17  
18  
19  
20  
21  
22  
23  
24  
25  
26  
27  
28  
29  
30  
31  
32  
33  
34  
35  
36  
37  
38  
39  
40  
41  
42  
43  
44  
45  
46  
47  
48  
49

For Peer Review